

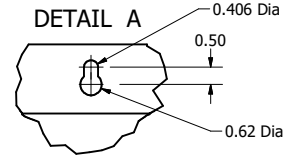
SineWave Part Number	Schematic Drawing#	Approx Weight (LBS)
KMG80C01A	24281-23A	263
KMG80C01P	24281-23P	264

HorsePower (HP)	kVar	Max Amps	Voltage (V)	HZ	Phase
75	10	80	600	60	3

1

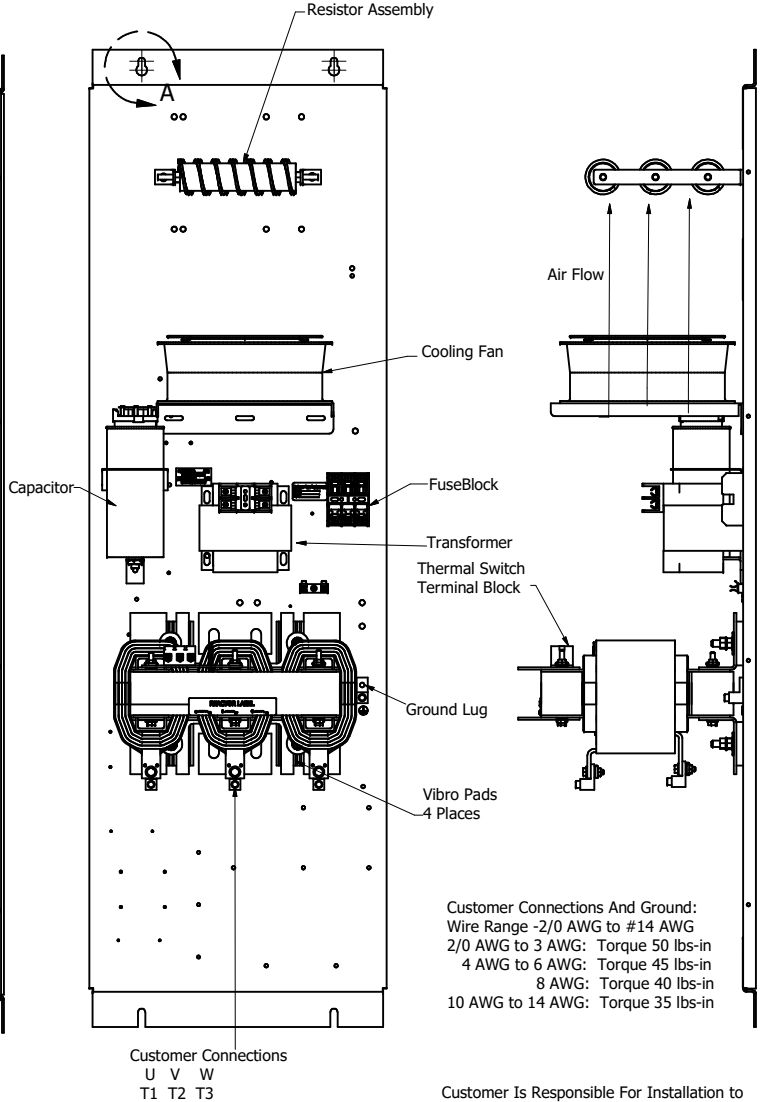
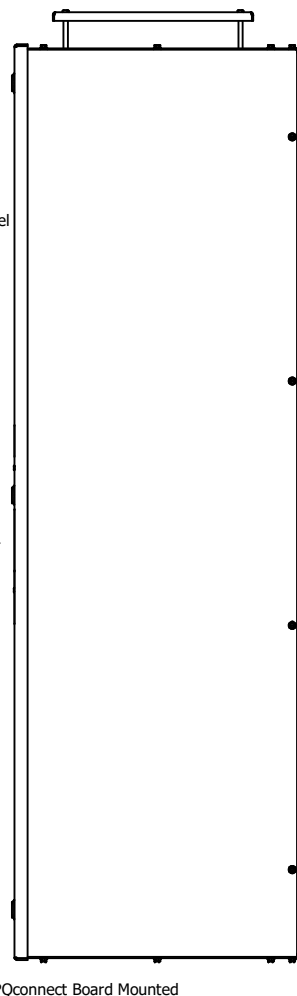
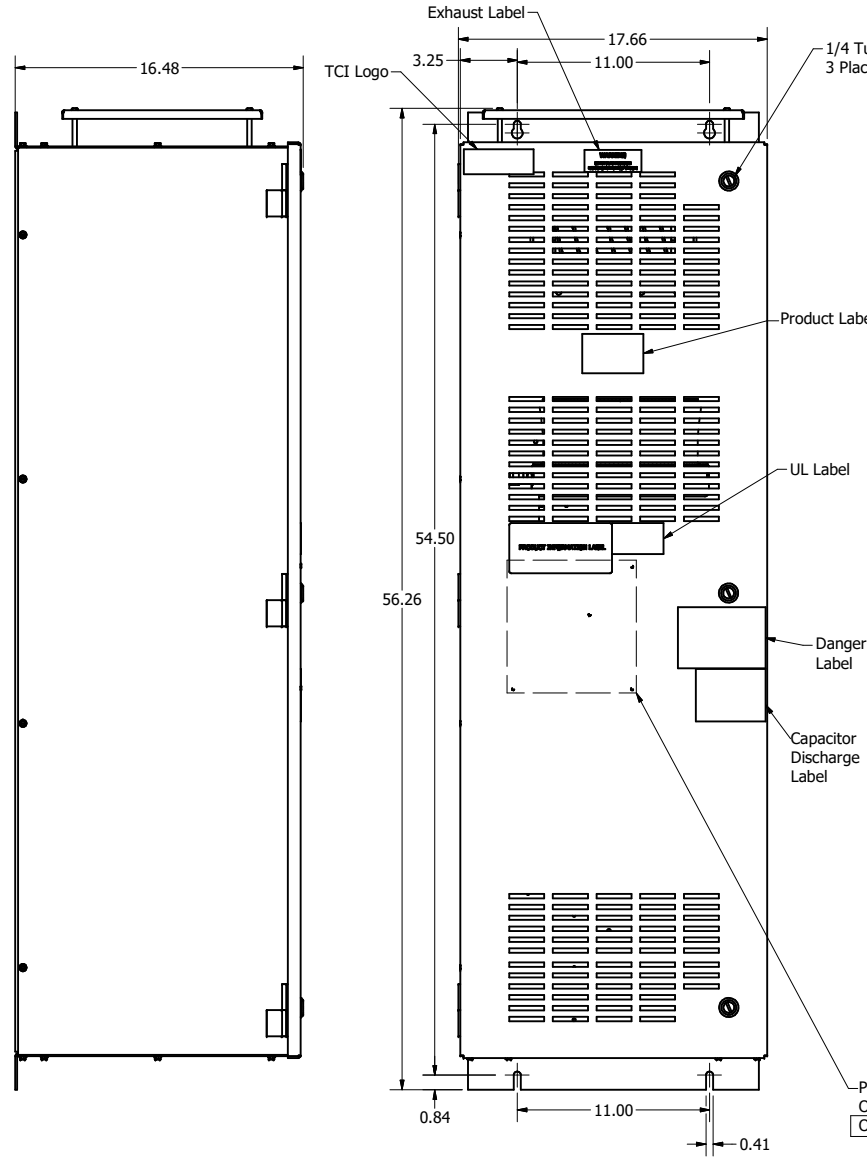
Thermal Switch Terminal Block

Wire Range: 18 AWG To 4 AWG.
Torque: 20 LB-IN (2.3 Nm)
Switch Opens on Temperature Rise
Contact Rating: 6A @ 120 VAC



D
C
B
A

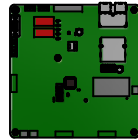
D
C
B
A



Customer Connections And Ground:
Wire Range -2/0 AWG to #14 AWG
2/0 AWG to 3 AWG: Torque 50 lbs-in
4 AWG to 6 AWG: Torque 45 lbs-in
8 AWG: Torque 40 lbs-in
10 AWG to 14 AWG: Torque 35 lbs-in

Customer Is Responsible For Installation to Meet All National And Local Electrical Codes.

Material(s) Shall be RoHS Compliant



TCI, LLC CLAIMS PROPRIETARY RIGHTS IN THE MATERIAL HEREIN DISCLOSED. IT IS SUPPLIED WITHOUT PREJUDICE TO ANY PATENT RIGHTS OF TCI AND MAY NOT BE REPRODUCED OR USED TO MANUFACTURE ANYTHING SHOWN THEREIN WITHOUT WRITTEN PERMISSION FROM TCI.

TOLERANCES (EXCEPT AS NOTED)			
DECIMAL			
.XX	± .25		
.XXX	± .10		
FRACTIONAL			
1/16	± 1/16		
ANGULAR			
1°	± 1°		

TCI W132 N10611 Grant Drive
Germantown, WI 53022

KMG80C01-, SineWave Filter
Enclosed Type 1, 75HP, 600V

DRN BY: DSW DATE: 10/14/2016 104444DG
SCALE: 1/5.5